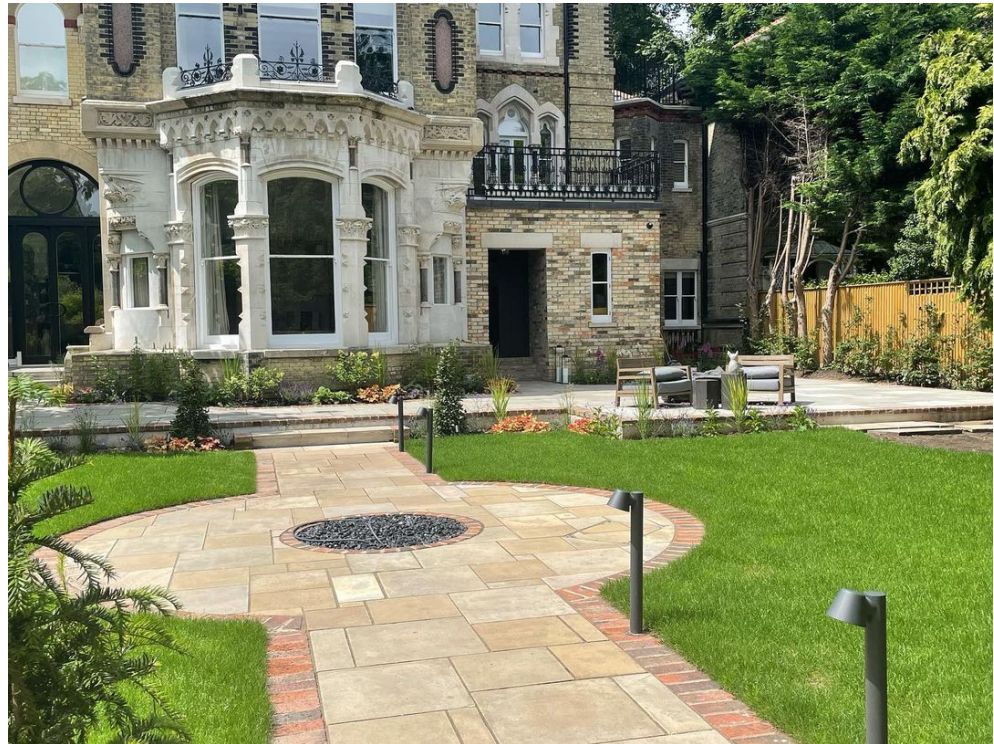


## CASE STUDY

# GARDEN DESIGN & LANDSCAPING

## NORTH LONDON

Ross Solution Projects (RSP) have shown many times that we can work to tight schedules and yet produce work of the finest quality. This was recently demonstrated at a high-end residential project in beautiful Hampstead.



The work had to be completed in time for new occupants to move in. The fact that the house and its garden were adjacent to a busy thoroughfare meant that possible delays and congestion had to be factored into the timings.

Hampstead has a village atmosphere and is known for its picturesque streets, twisting alleyways and superb examples of Georgian architecture. Its attractions include a wide variety of boutique shops and characterful cafes, pubs and restaurants, while Hampstead Heath provides the "green lungs" for this delightful neighbourhood. Hampstead residents are known to aspire to high standards for both the interior design of their properties and for the gardens and external areas that enhance the aesthetic and financial value of their homes.

RSP is very experienced in external planning and landscaping that will present the finest properties to best effect, as well as in the careful selection of materials, features and planting schemes to suit the individual character of each residence.

The Hampstead project involved a significant range of hard landscaping features, including the installation of a wall and steps, the laying of paving, work on rendering and the fixing of a lighting duct. We also introduced an attractive water feature, brought in new topsoil and new turfing for the lawns, while the whole setting was enhanced by an imaginative planting of trees, shrubs and bedding plants.

The client was extremely happy with the outcome and with the fact that they were able to move into the property on time and with the work completed.



This major project took RSP only six weeks from start to finish, whereas our team would have normally expected the work to have extended to at least two weeks longer.